



NASA to MARS - Womensipration

Nandhini Duraisamy



Katherine Coleman Goble **Johnson** (born August 26, 1918) is an American mathematician whose calculations of orbital mechanics as a NASA employee were critical to the success of the first and subsequent U.S. crewed spaceflights



Nancy Grace Roman (May 16, 1925 – December 25, 2018) was an American **astronomer** and one of the **first** female executives at **NASA**. She is known to many as the "**Mother of Hubble**" for her role in planning the **Hubble** Space Telescope



Some of the women working on the Curiosity rover taken in the "Mars Yard," a simulated Martian landscape

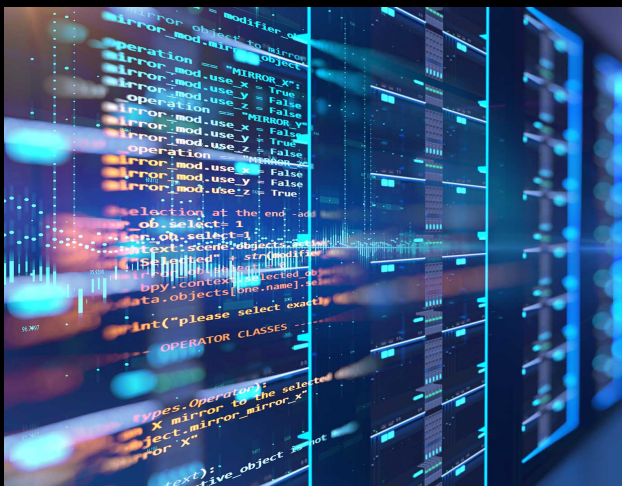
President and Chief Operating Officer at SpaceX, an American space transportation company, where she is responsible for day-to-day operations and company growth



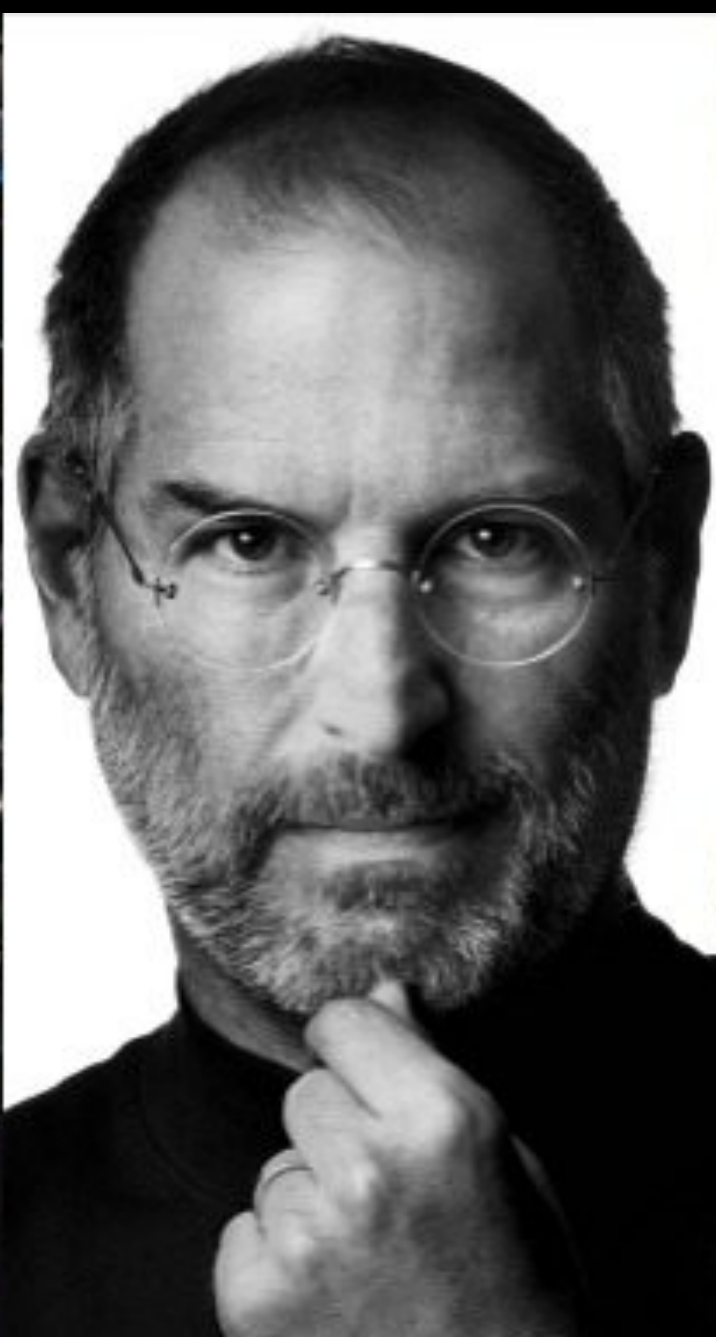


≠

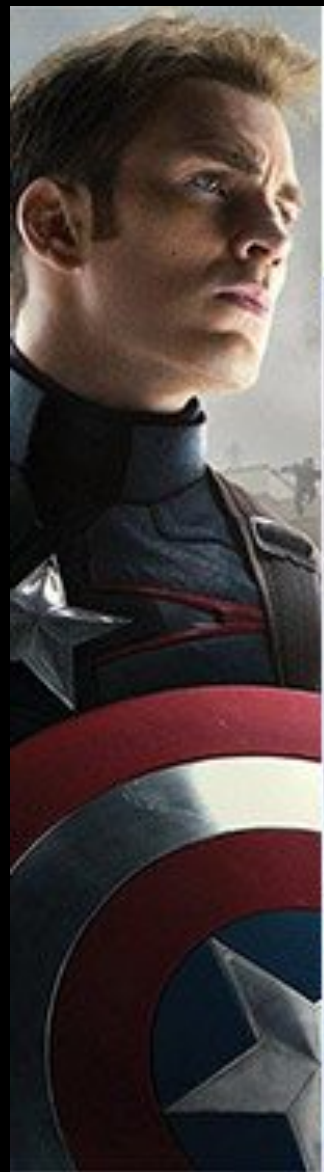




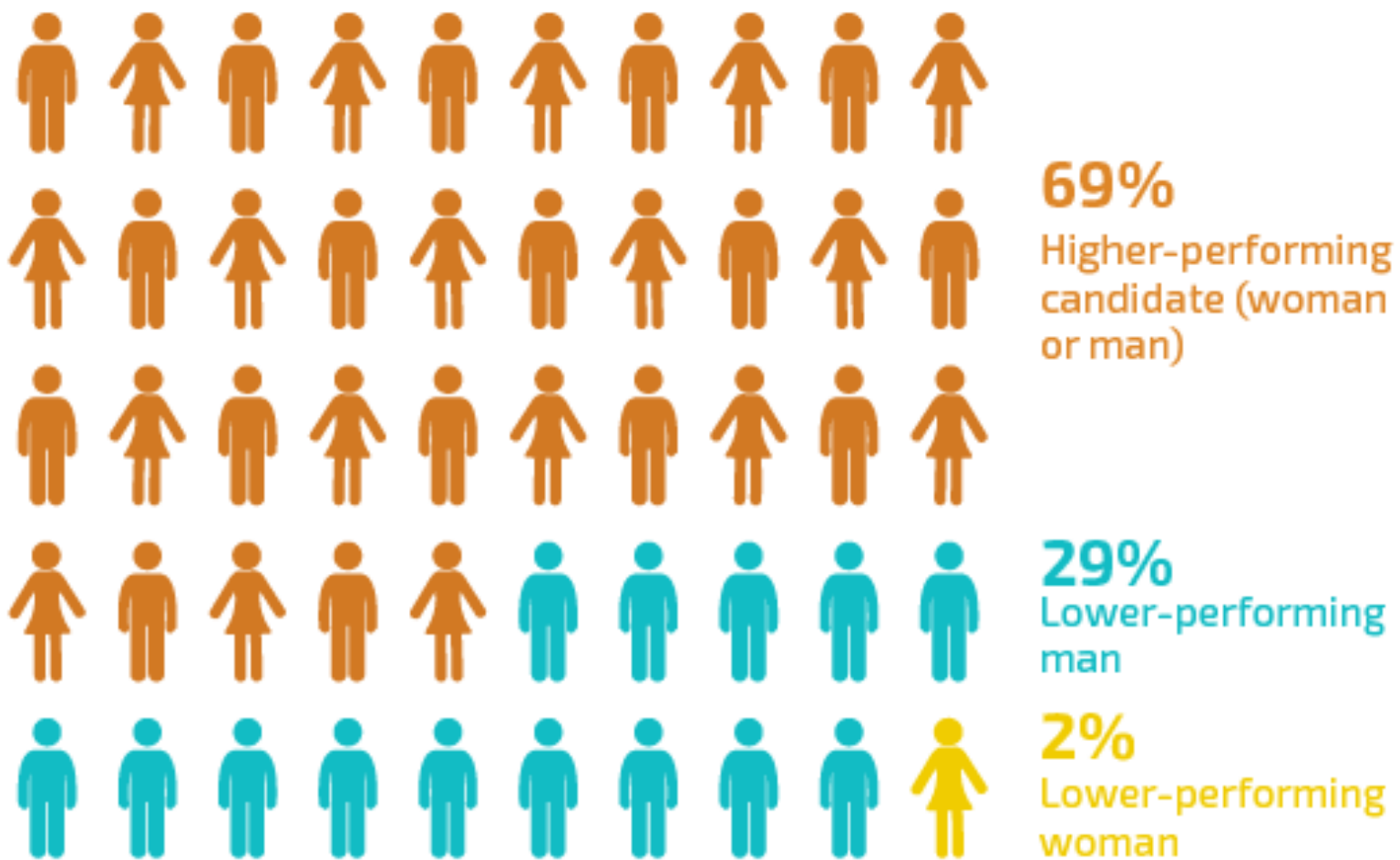








CHANCE OF CHOOSING THE RIGHT CANDIDATE





WOMEN IN TECH

BY THE NUMBERS



Most STEM university grads are men

Women in STEM



Female STEM graduates (39%)
Female graduates (61%)

Men in STEM



Male STEM graduates (72%)
Male graduates (28%)

VS

Statistic courtesy of Statistic Canada

Gender breakdown of top 10 highest-paid jobs

Percentage of male (blue) and female (red) workers in America's highest-paid jobs.



Traditional Gender Stereotypes.

Feminine.

Not aggressive.
Dependent.
Easily influenced.
Submissive.
Passive.
Home-oriented.
Easily hurt emotionally.
Indecisive.
Talkative.
Gentle.
Sensitive to other's feelings.
Very desirous of security.
Cries a lot.
Emotional.
Verbal.
Kind.
Tactful.
Nurturing.

Masculine.

Aggressive.
Independent.
Not easily influenced.
Dominant.
Active.
Worldly.
Not easily hurt emotionally.
Decisive.
Not at all talkative.
Tough.
Less sensitive to other's feelings.
Not very desirous of security.
Rarely cries.
Logical.
Analytical.
Cruel.
Blunt.
Not nurturing.





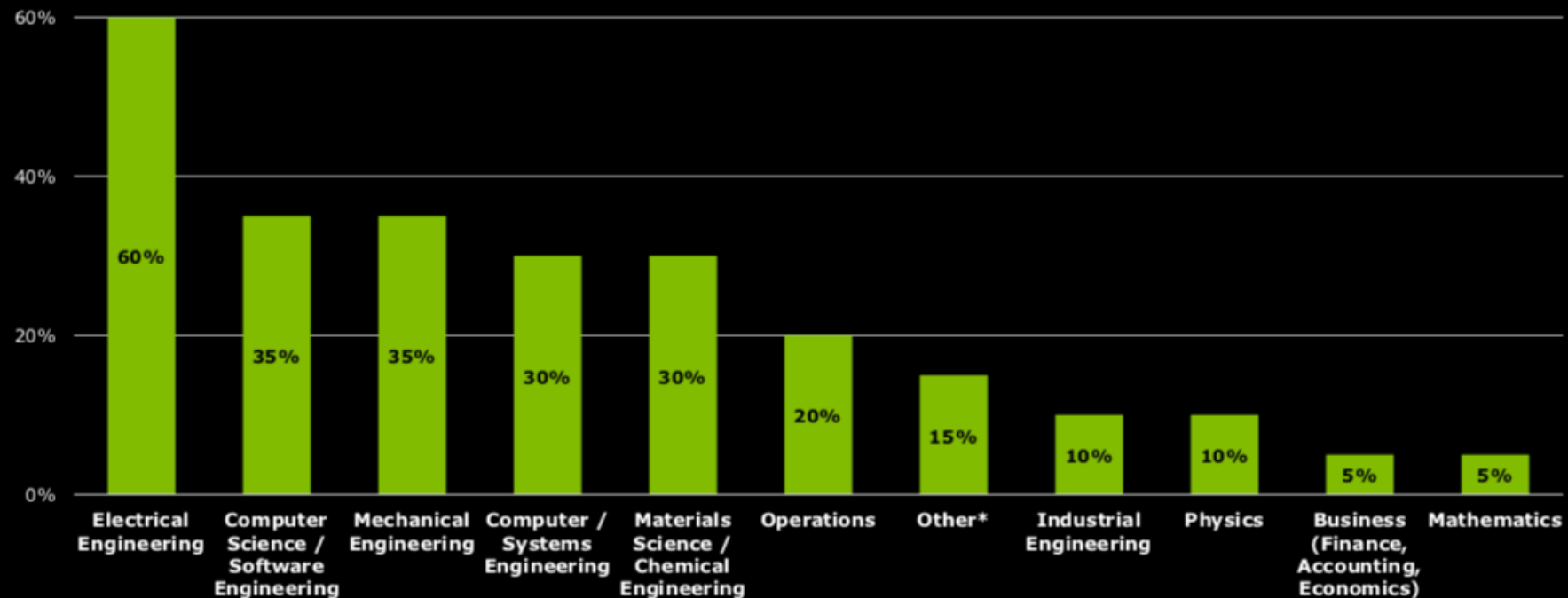
95%

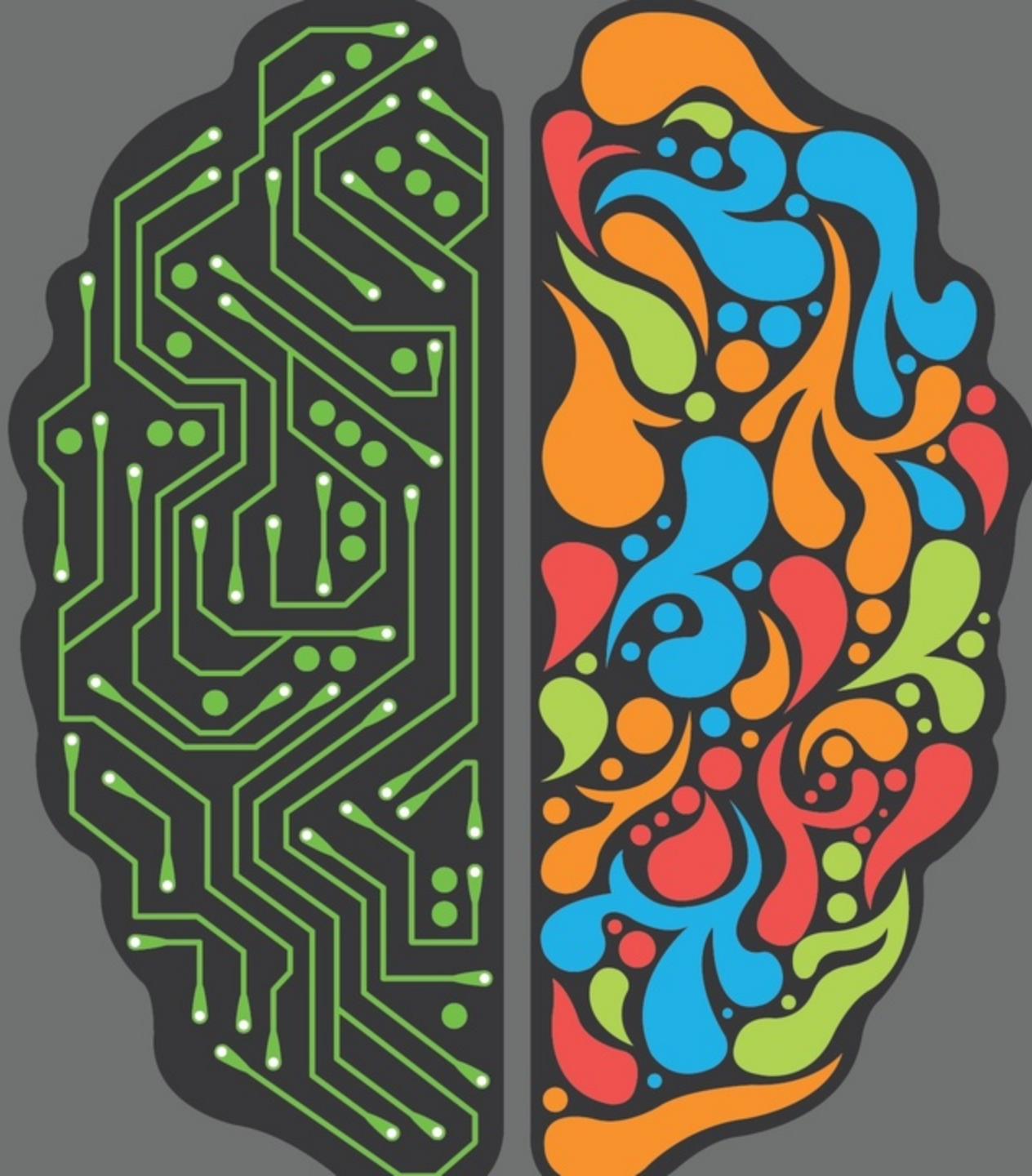
of all successful cyber attacks
is caused by human error

Source: IBM Cyber Security Intelligence Index



Percentage of companies that have difficulty filling open positions by discipline





Critical Thinking Skills

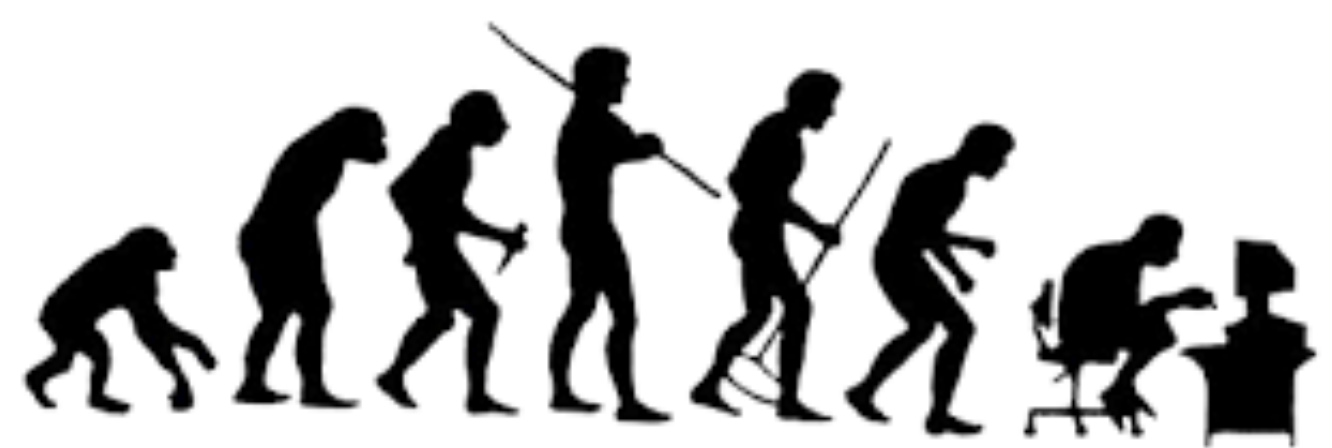


Comparing
& Point of
View

Deductive
Thinking,
Inventive
Thinking

Analytical
Thinking,
Creative
Thinking

Visual /
Spatial
Thinking,
Evaluative
Thinking



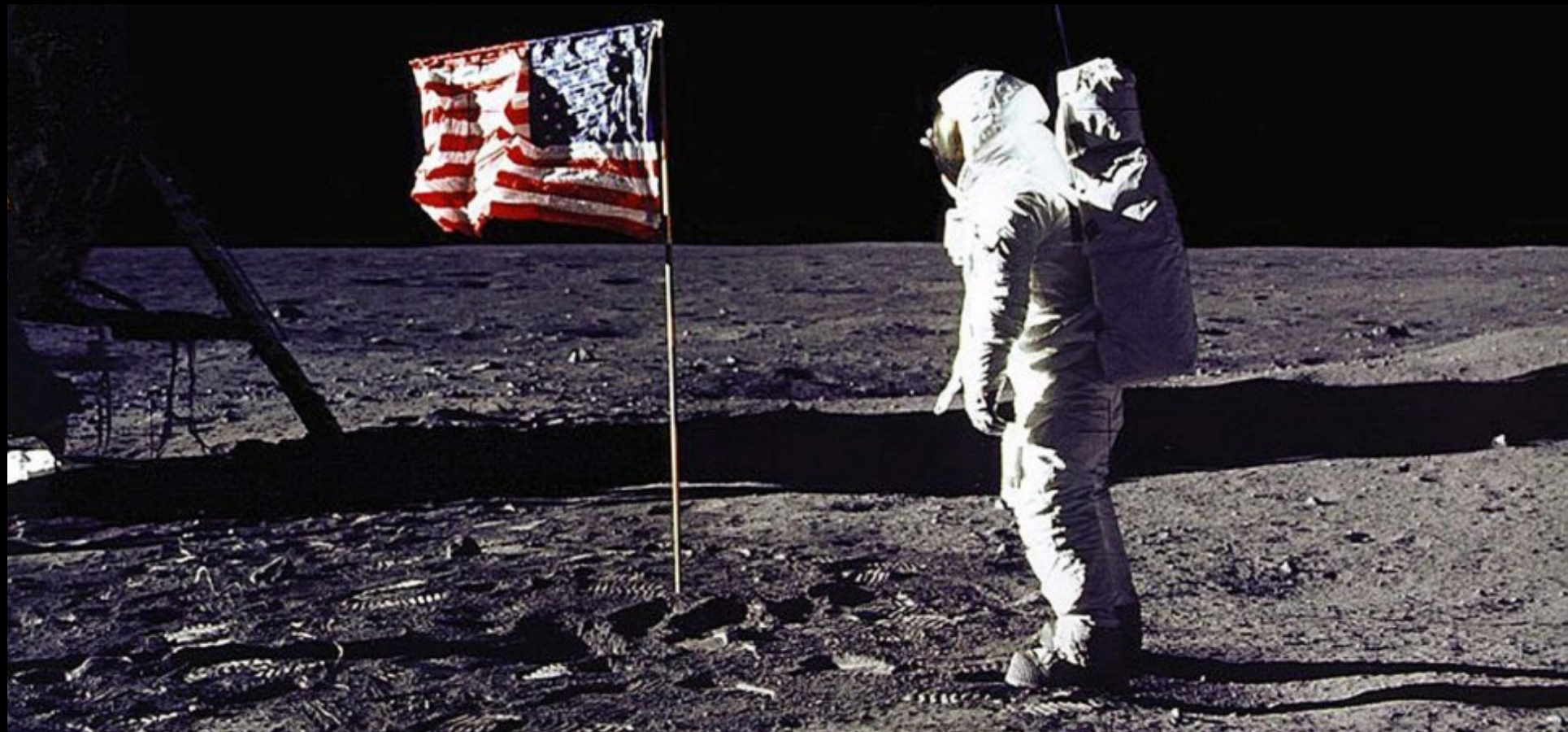




*When women support each other,
incredible things happen.*



DON'T TELL ME SKY IS THE LIMIT, WHEN
THERE ARE FOOTPRINTS ON THE MOON





We Can Do IT !!!!!!!